



DESIGNED &  
MADE IN CANADA

## CONTACT

Toll Free +1 888 510 2893  
Phone 226-400-4101  
Email [hello@muddconcrete.com](mailto:hello@muddconcrete.com)  
Web [muddconcrete.com](http://muddconcrete.com)

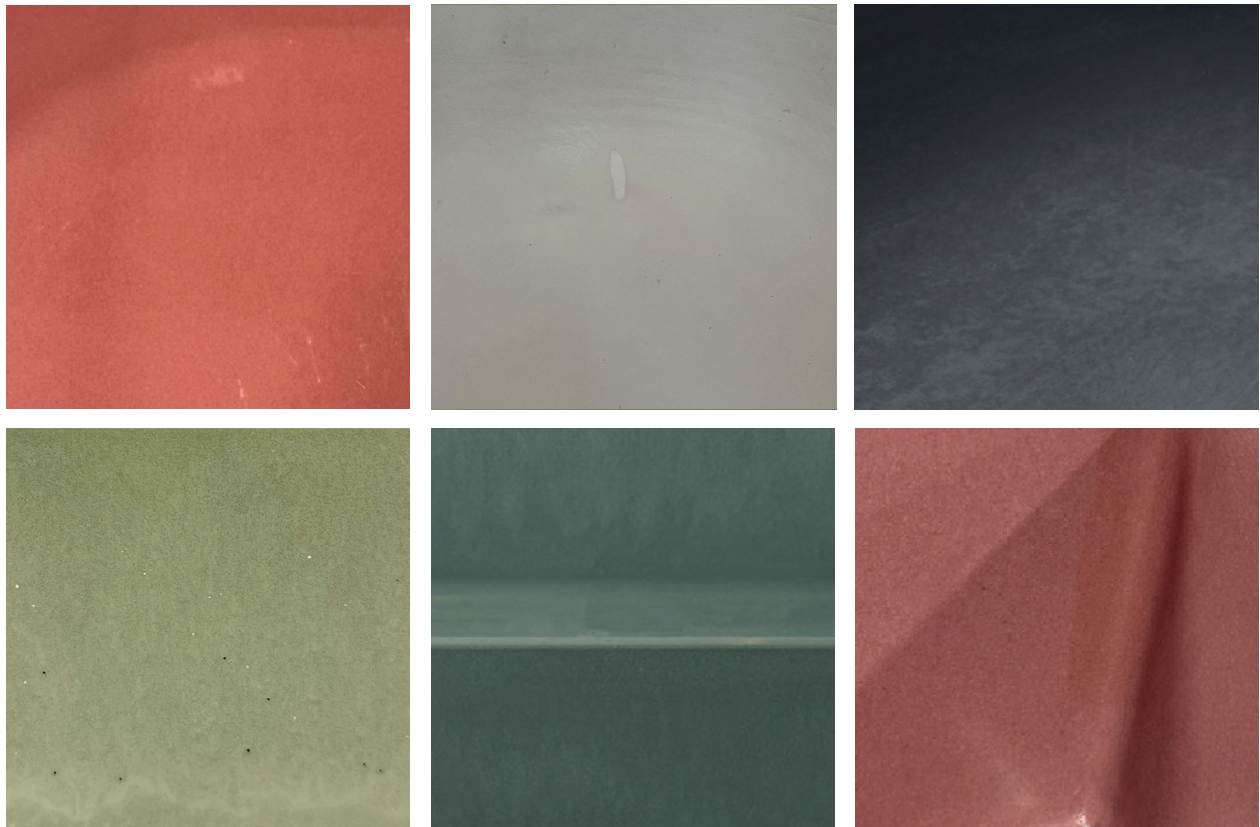
## MATERIAL CHARACTERISTICS

Each of our basins is individually hand-cast, resulting in subtle differences that make each basin unique. Concrete, as a natural material, exhibits characteristics, such as colour variations, textural changes and surface markings that reflect its organic nature. These organic qualities contribute to the unique and imperfect beauty of each basin, highlighting the honest and raw nature of concrete as a cast material.

Due to screen differences and the hand-made nature of our products, the item that you receive may have variations from what you see online. Colour perception is affected by factors like the lighting conditions and surrounding background, which can amplify or alter how colours appear in different settings and spaces.

## COLOUR VARIATION

Concrete naturally has colour variation due to how it's mixed, poured, and cured. Factors like organic ingredients, temperature and humidity can all change how the colour appears, creating slight shifts in tone across each piece.





DESIGNED &  
MADE IN CANADA

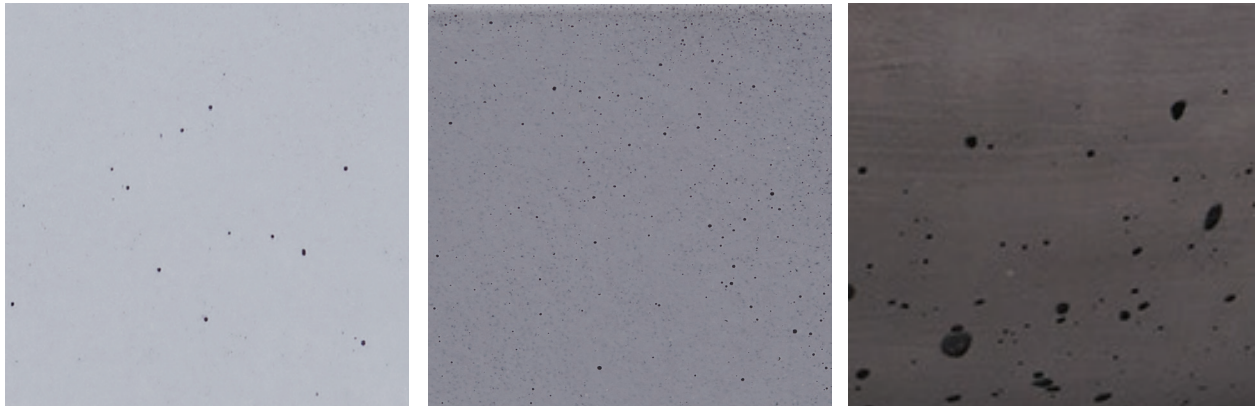
## CONTACT

Toll Free Phone +1 888 510 2893  
Email hello@muddconcrete.com  
Web muddconcrete.com

## BUGHOLES

Pinholes, surface holes or what are known as bugholes may be present or can appear on the surface of your sink over time. Larger bugholes that fall outside CSA compliance standards will be filled during fabrication. When filled, there can still be an obvious difference between the fill colour and the basin.

Pinholes on or just below the surface of your sink are voids that result from the migration of entrapped water or air as part of the casting & curing process. This does not affect the performance.



## CRAZING

Crazing may occur naturally during the casting process, adding character without compromising the basin's strength or quality. These fine surface lines are purely aesthetic and do not affect functionality, preserving both beauty and integrity of the piece.

